

**RESOLUTION R 2019-04
HOPEWELL TOWNSHIP, BEAVER COUNTY, PENNSYLVANIA**


**A RESOLUTION OF THE TOWNSHIP OF HOPEWELL, BEAVER COUNTY, PENNSYLVANIA
ACCEPTING CERTAIN PUBLIC IMPROVEMENTS OF PHASE III OF THE CLAIRMONT MANOR
SUBDIVISION AND LAND DEVELOPMENT PLAN AS IDENTIFIED IN EXHIBIT "A" ATTACHED
HERETO.**

In accordance with the Development Improvement Agreement, the Developer has satisfactorily completed certain public improvements, consisting of Storm Sewers and Sanitary Sewers, for Clairmont Manor Phase III as set forth in Exhibit "A" attached hereto.

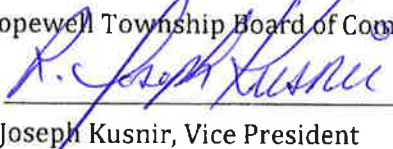
Upon review and inspection of the above referenced improvements, the Township Engineer has determined that said public improvements have been completed in accordance with the approval plans has recommended acceptance of these public improvements.

RESOLVED AND ENACTED this 8th Day of April, 2019. THE PUBLIC IMPROVEMENTS IN EXHIBIT "A" ATTACHED HERETO ARE ACCEPTED BY HOPEWELL TOWNSHIP.

Attest:



Michael B Jones, Solicitor

Hopewell Township Board of Commissioners
By: 

R. Joseph Kusnir, Vice President

Clairmont Manor

Phase 3 Public Improvements

Sanitary Sewer System

Sanitary Manholes – 12

J,H,V,U,T,S,R,Q,P,N,M,L

8" Diameter SDR-35 Sanitary Sewer Line – 1,751.43 LF

J to H – 216.68 LF

H to KH – 155.07 LF

V to U – 282.27 LF

U to T – 130.33 LF

T to S – 130.33 LF

S to R – 130.33 LF

R to Q – 130.33 LF

Q to P – 130.33 LF

P to N – 92.63 LF

N to M – 92.45 LF

M to L – 92.45 LF

Storm Sewer System

Storm Manholes – 1

A

Storm Inlets – 17

16,15,39,38,37,36,35,34,45,46,44,43,A,B,C,D,E

15" CPP Storm Sewer Pipe – 1,789.23 LF

Inlet A to B -- 46.13 LF

Inlet B to ST MH A – 10.84 LF

ST MH A to Inlet C – 183.79 LF

Inlet C to Inlet D – 128.69 LF

Inlet D to Inlet E – 35.47 LF

Inlet E to Discharge – 166.25 LF

Inlet 16 to 15 – 22.00 LF

Inlet 15 to 13 – 161.50 LF

Inlet 39 to 38 – 22.00 LF

Inlet 38 to 36 – 297.62 LF

Inlet 36 to 37 – 22.00 LF

Inlet 36 to 34 – 297.62 LF

Inlet 34 to 35 – 22.00 LF

Inlet 45 to 46 – 22.00 LF

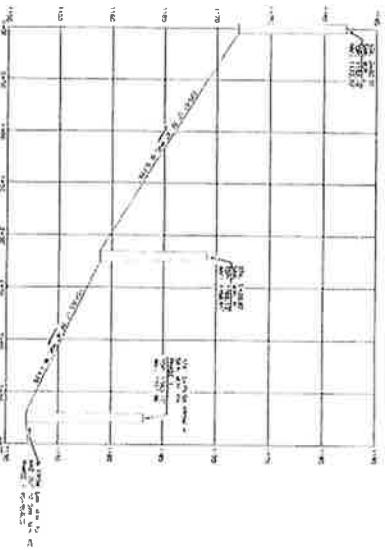
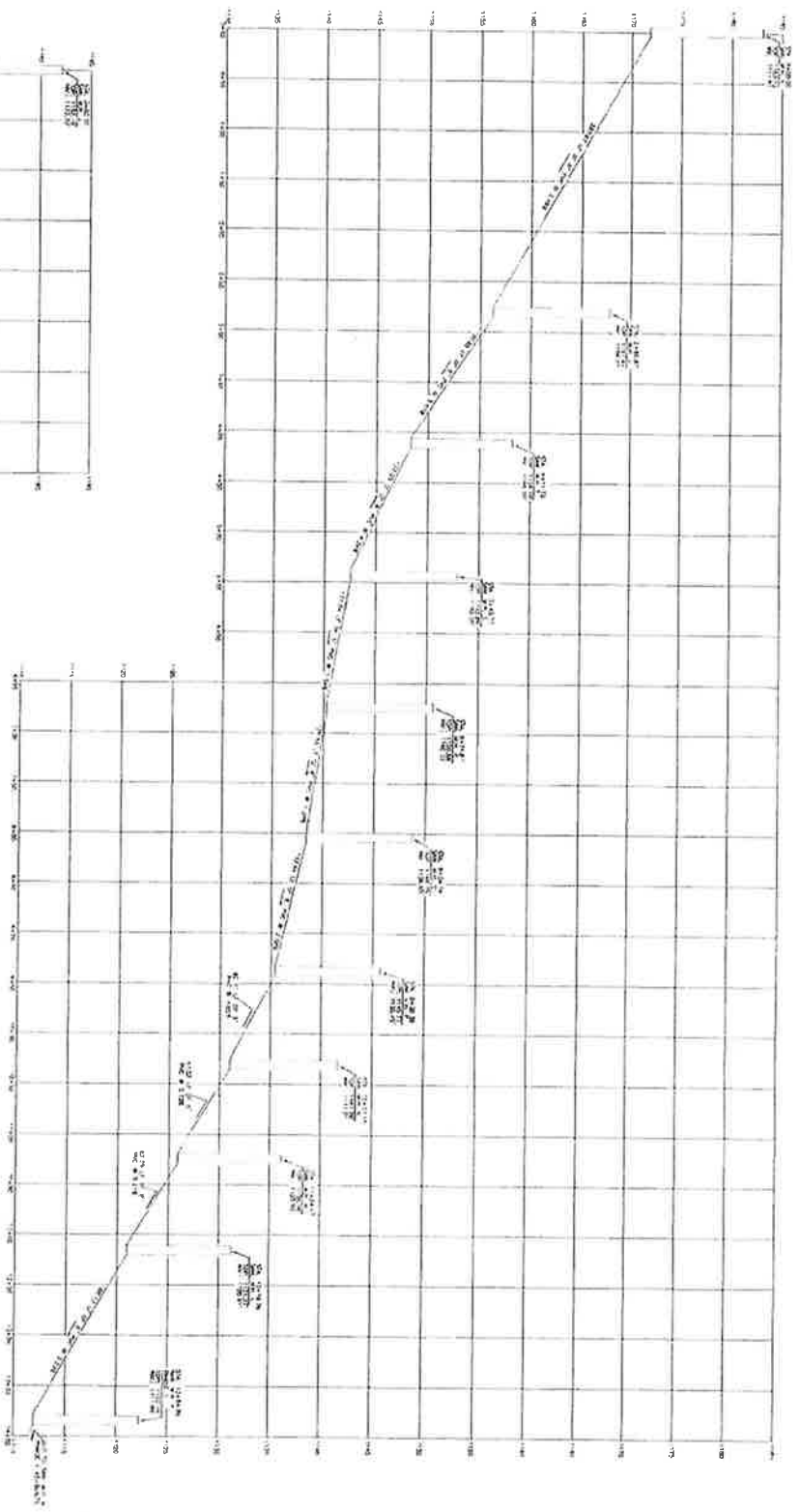
Inlet 46 to 44 – 176.12 LF

Inlet 44 to 43 – 22.00 LF

Inlet 44 to ST MH 3 – 153.20 LF

24" CPP Storm Sewer Pipe – 252.53 LF

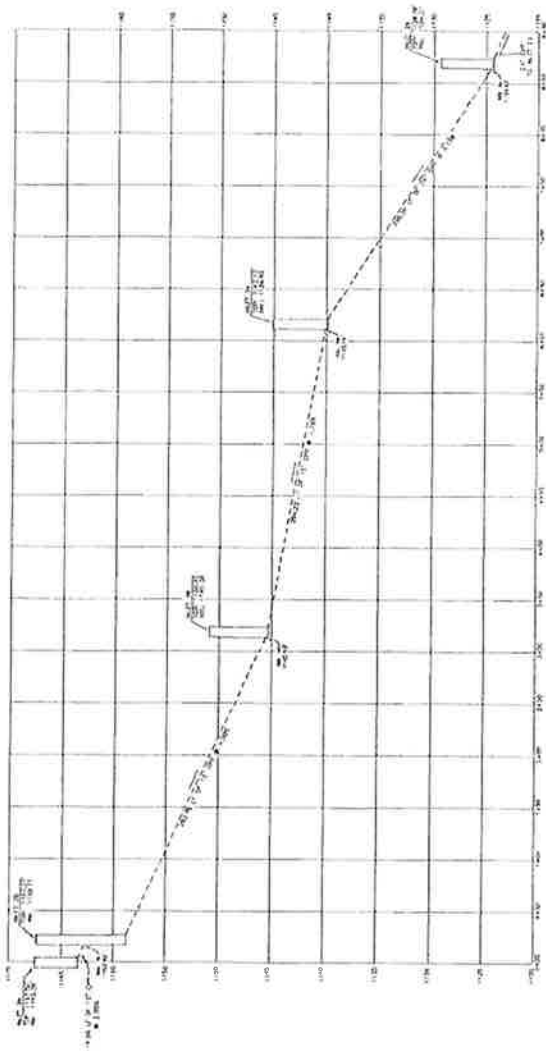
Inlet 34 to 26 – 252.53 LF



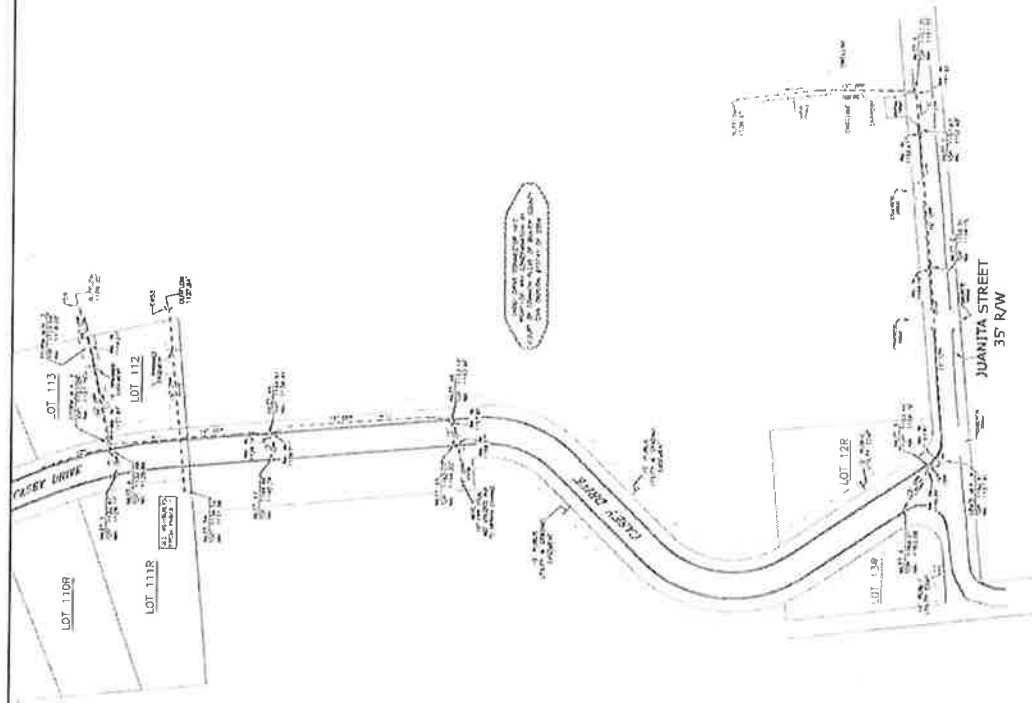
PROFILE SCALE: HORZ: 1" = 50', VERT: 1" = 5'

SHEET 2 OF 2

AS-BUILT SURVEY OF SANITARY FACILITIES
 IN PHASE 3 OF THE CLARIONT MAJOR PLAN
 BAN BROOK, MD
 HOPKELL TWP. SEWER DEPARTMENT
 6480524 AND 6480525
 PRINGLE-NERO LAND SURVEYING, INC.
 DIANE J PRINGLE, P.L.S., WALTER J NERO, P.L.S.
 2000 HARRIS AVENUE, SUITE 102
 FREDERICK, MD 21701-2088
 PHONE (410) 708-8888



AS-BUILT SURVEY OF STORM FACILITIES
 IN PHASE II OF THE CLAMMONT KANGAS FLOOD
 CONTROL PROJECT
 HOFFMILL TOWNSHIP
 AND
 WARREN, IOWA, INC.
 PROJECT ENGINEER: BRUCE DUNN, LICENSED SURVEYOR
 207 W. 10TH ST., SUITE 101
 PRINGLE-NERO LAND SURVEYING, INC.
 PROFESSIONAL LAND SURVEYORS
 DUANE J. PRINGLE, P.L.S., WALLEY J. NERO, P.L.S.
 4700 BUCKINGHAM AVENUE, SUITE 112
 PRINGLE, IOWA 50455



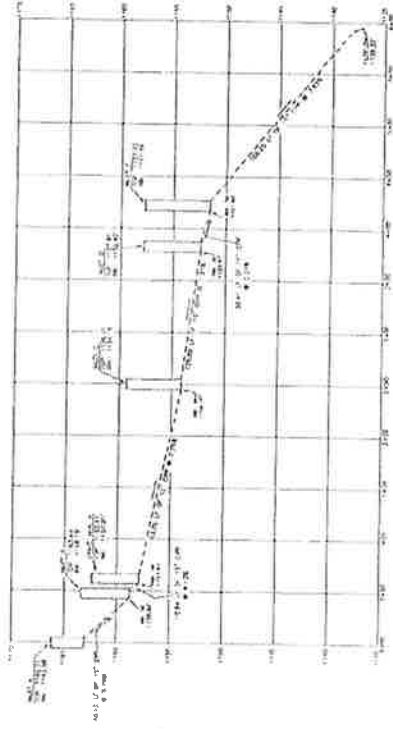
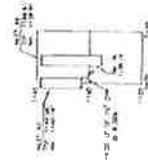
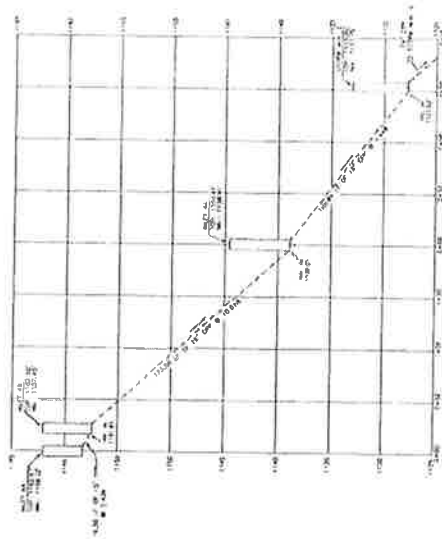
LOT 110R	110R	110R
LOT 111R	111R	111R
LOT 112	112	112
LOT 12B	12B	12B
LOT 13B	13B	13B

AS-BUILT SURVEY OF STORE FACILITIES
OF OPTISTE CASEY DRIVE CONNECTOR
DANBURY, CT
ADDRESS: DANBURY, CT
MADONNA AGNES, INC.
DANBURY, CT

PRINGLE-NERO LAND SURVEYING, INC.
PROFESSIONAL LAND SURVEYORS
D. JAMES J. PRINGLE, P.L.S. & WALLEY J. NERO, P.L.S.
200 WINDY HILL DRIVE, SUITE 112
DANBURY, CT 06810
PHONE: (783) 750-0885

SHEET 1 OF 2





AS-BUILT SURVEY OF STORM FACILITIES
 AT OFFSITE SEWERAGE CONNECTION

HONOLULU, TERRITORY
 AND
 HAWAII, ISLANDS

BARBARA JONES, INC.
 2000 W. WILSON AVENUE, SUITE 200
 HONOLULU, HAWAII 96819

PRINGLE-NERO LAND SURVEYING, INC.
 PROFESSIONAL LAND SURVEYORS

DUANE J. PRINGLE, P. S., VALLEY VIEW, HAWAII
 2022 BRIDGE AVENUE, SUITE 112
 HONOLULU, HAWAII 96815

PROFILE SCALE: HORZ.: 1" = 50' . VERT.: 1" = 5'

SHEET 2 OF 2

DATE: 08/20/2018