

RESOLUTION - 79-109

A RESOLUTION OF THE TOWNSHIP OF HOPEWELL,
BEAVER COUNTY, PENNSYLVANIA, ADOPTING
STANDARD CONSTRUCTION DETAILS.

WHEREAS, the Board of Commissioners of the Township of Hopewell is desirous of adopting Standard Construction Details, said Standard Construction Details pertaining to any construction within the Township of Hopewell as set forth below; and

WHEREAS, the Standard Construction Details are more specifically set forth in Exhibit "A" through "G" which are attached hereto and made a part hereof as though fully set forth herein. These exhibits represent an illustration of specific construction details adopted in this Resolution by the Township of Hopewell; and

WHEREAS, with reference to Exhibit "A" relating to Pavement Section and Details, the Township Board of Commissioners shall have the authority to make the final determination as to whether cement or bituminous curb section are to be constructed.

NOW THEREFORE, be it resolved that the Board of Commissioners of the Township of Hopewell, a Municipal Corporation, under the First Class Township Code, situated in Beaver County, Pennsylvania, and it hereby resolves:

1. That the adoption of Standard Construction Details is hereby approved.

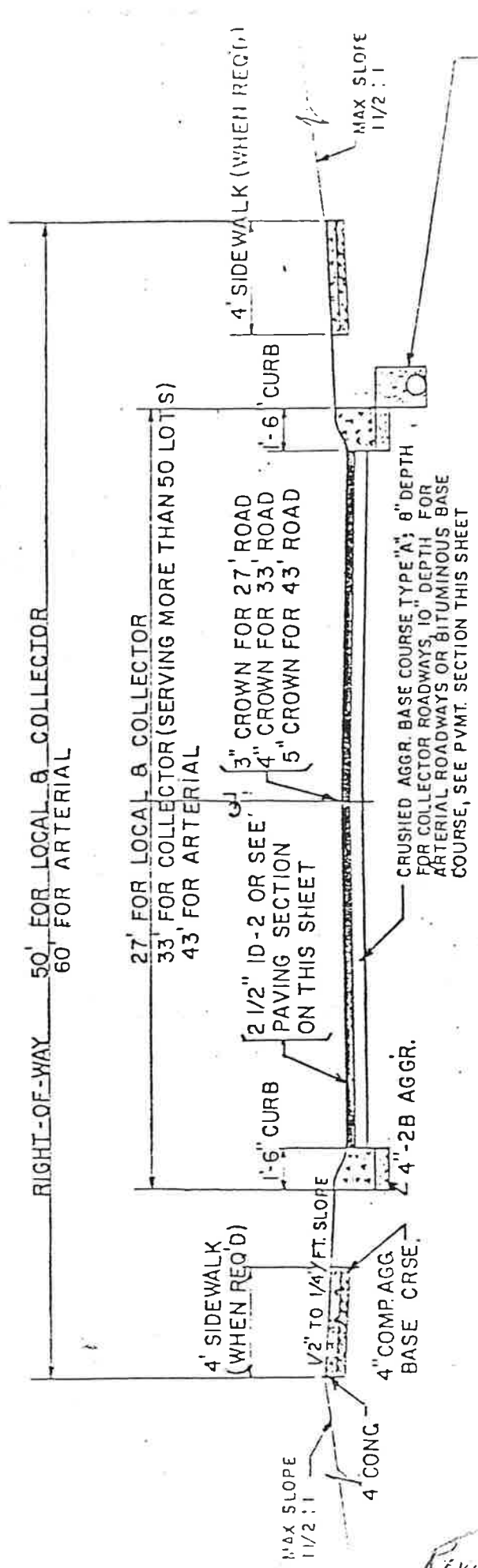
ADOPTED this 15th day of March, 1979.

ATTEST:

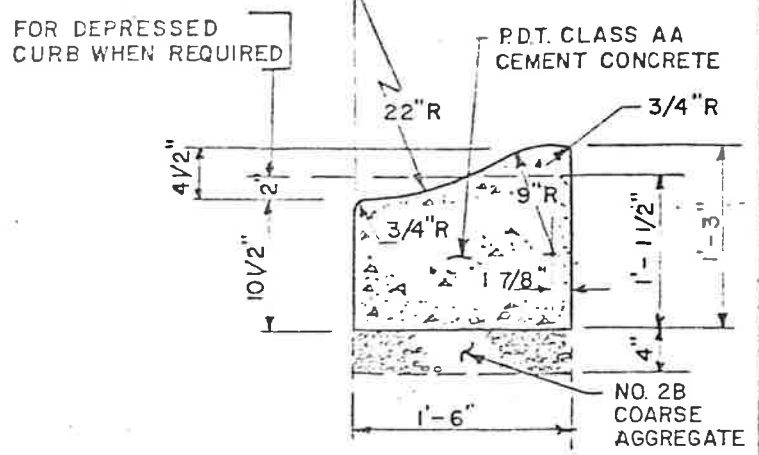
BOARD OF COMMISSIONERS
OF HOPEWELL TOWNSHIP

Ernie Gade

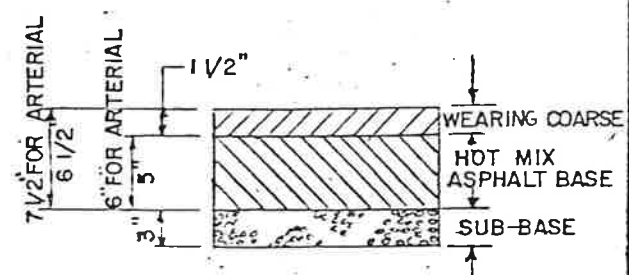
By: Melvin Rosant



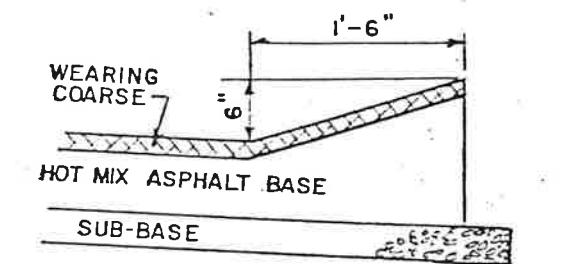
THE LEVEL DRAINAGE OF THE ROADWAY SHOULD BE MAINTAINED AND IF REQUIRED THEY SHALL BE INSTALLED BY THE DEVELOPER UNDER THE DIRECTION OF THE ENGINEER. UNDERDRAIN SHALL BE PIPE UNDERDRAIN, STONE UNDERDRAIN OR COMBINATION STORM SEWER AND UNDERDRAIN.



PL. CEMENT CONC. ROLLED CURB



BITUMINOUS PAVING SECTION



ALTERNATE ASPHALT CURB

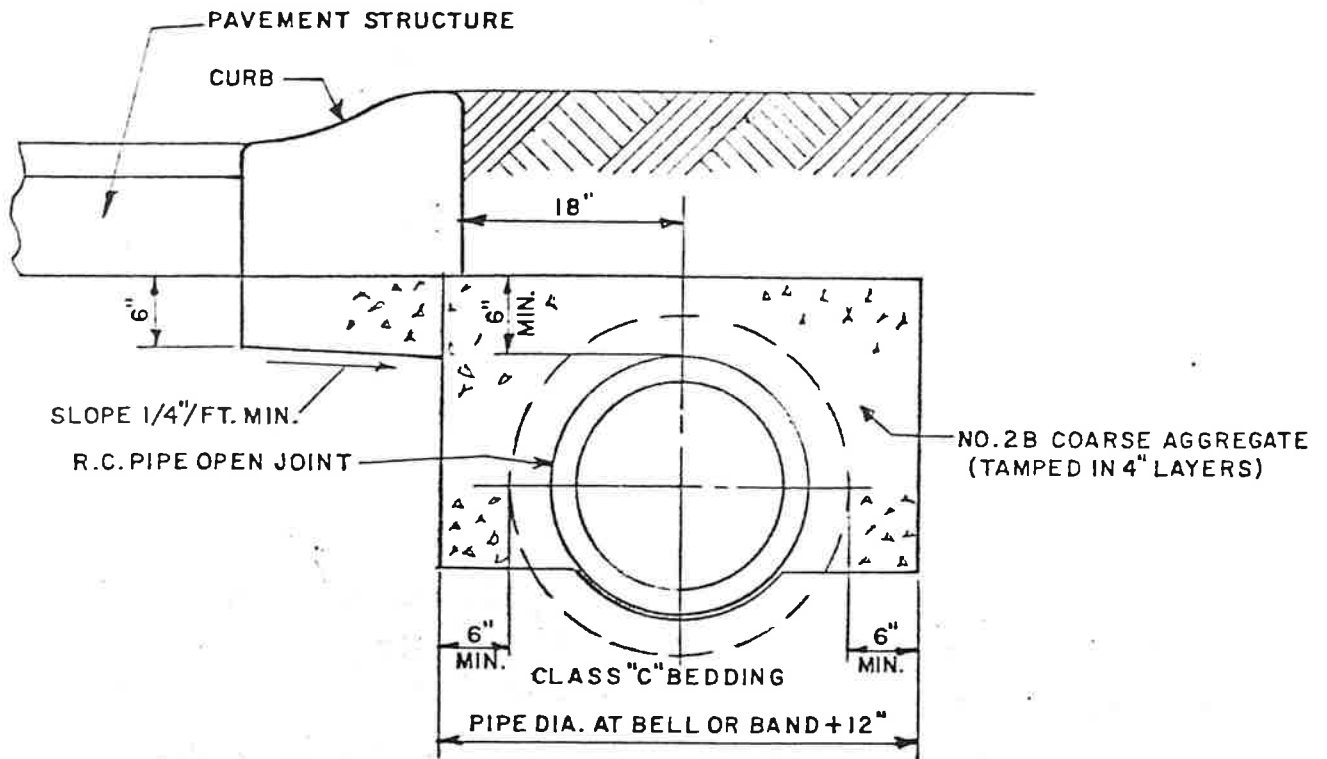
TYPICAL SECTION

CONSTRUCTION METHODS AND ALL MATERIALS SHALL CONFORM TO REQUIREMENTS IN PENN. DEP OF TRANSPORTATIONS SPECIFICATIONS FORM 40B (LATEST EDITION)

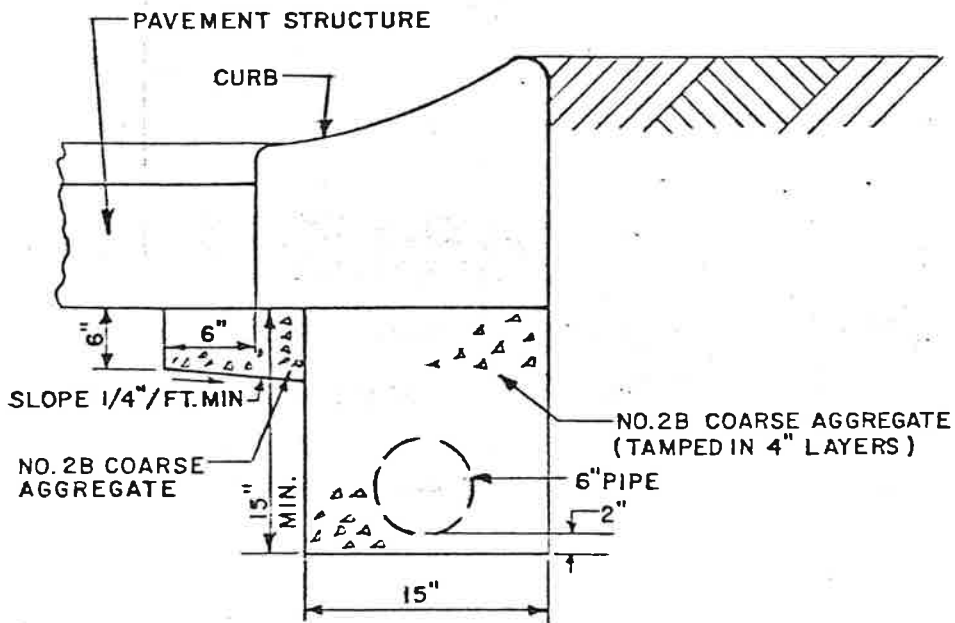
HOPEWELL TOWNSHIP
TYPICAL PAVEMENT SECTION & DETAILS

NIRA CONSULTING ENGRS., INC.

Revised 10-12-78



COMB. STORM SEWER & U'DRAIN BEHIND CURB

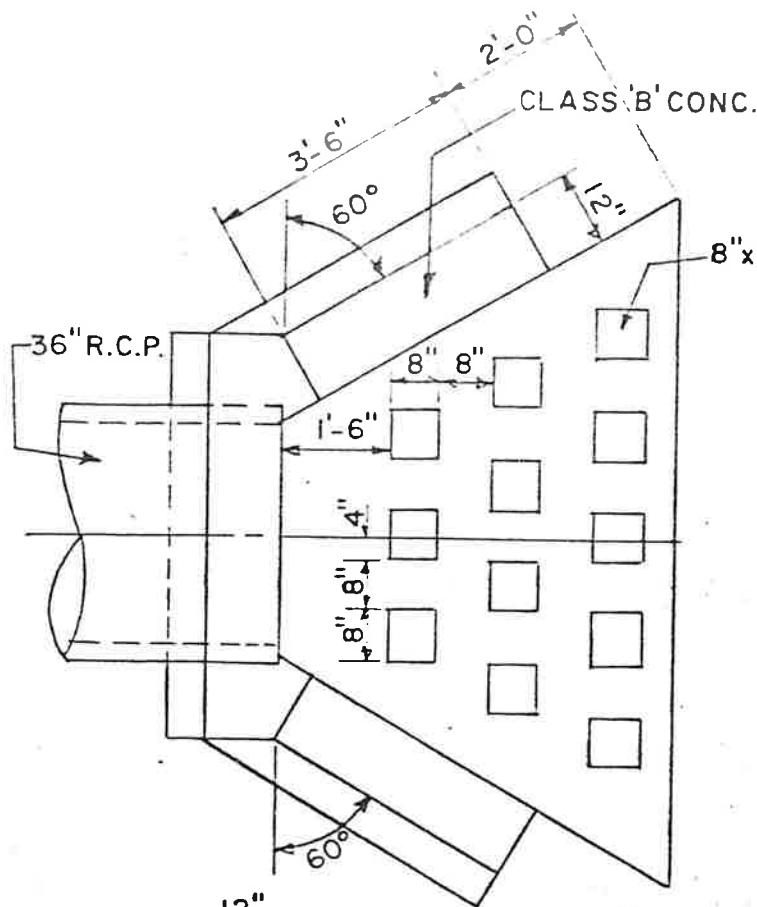


PIPE FOUNDATION U'DRAIN TYPE "A" & TYPE I BACKFILL

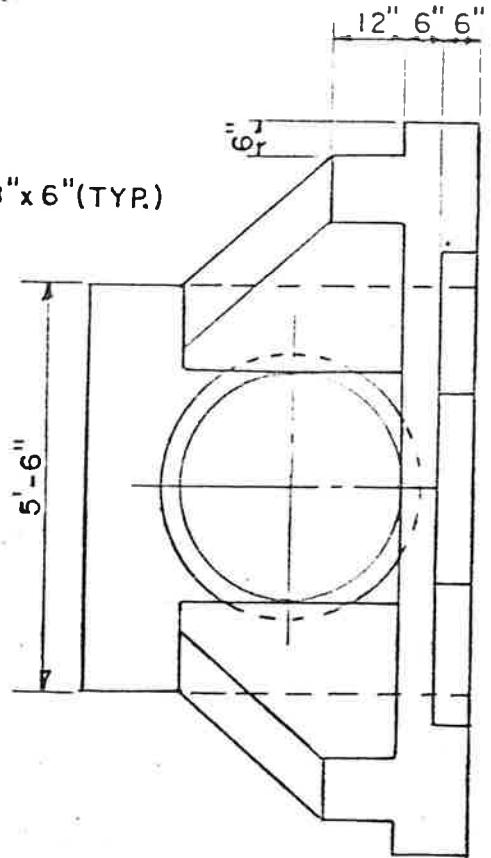
HOPEWELL TOWNSHIP .

TYPICAL U'DRAIN
DETAILS

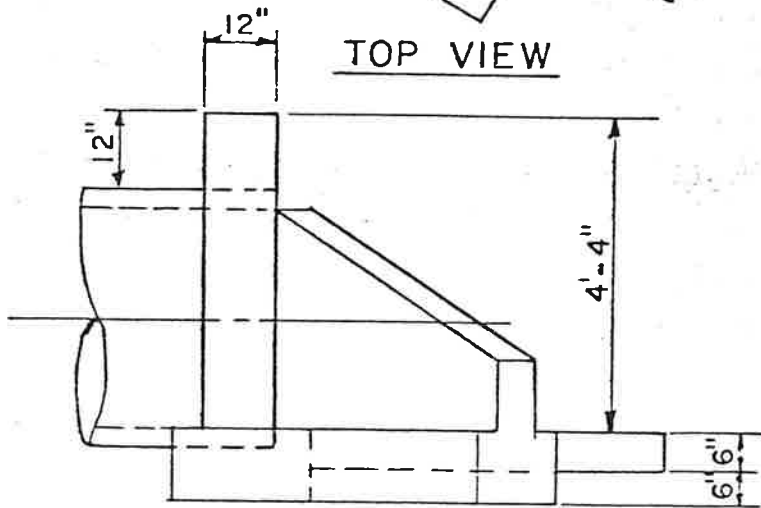
NIRA CONSULTING ENGRS., INC.



TOP VIEW



FRONT VIEW



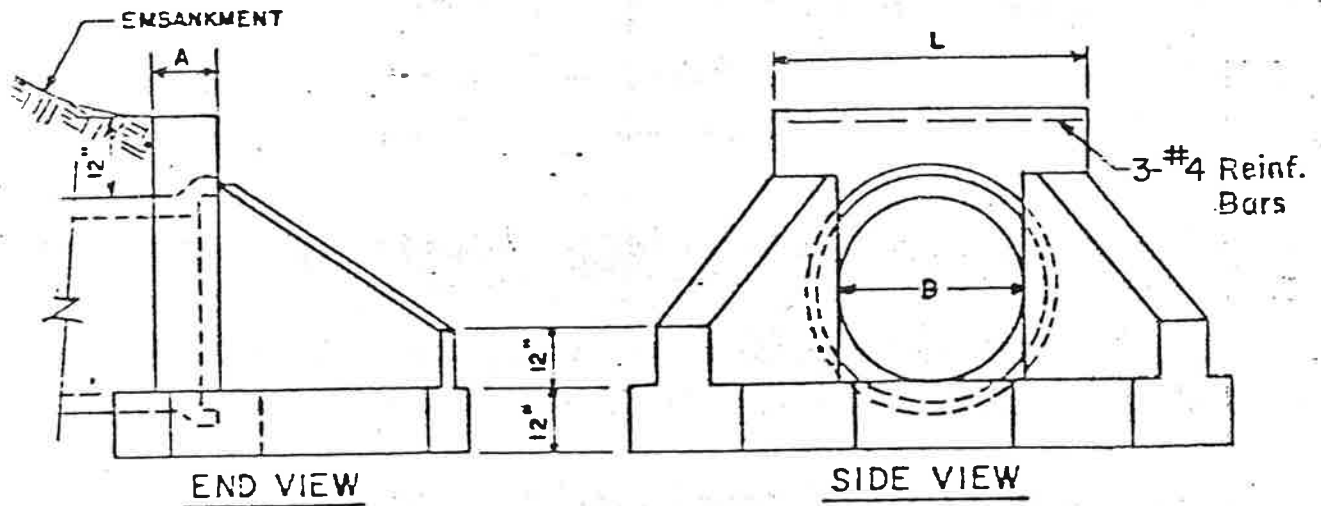
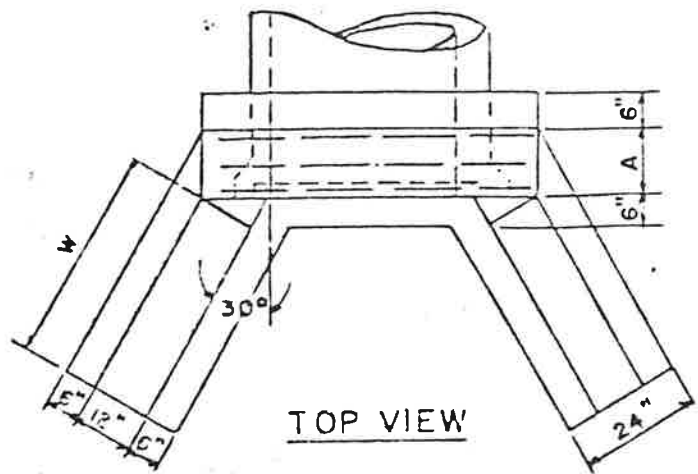
SIDE VIEW

HOPEWELL TOWNSHIP

STORM SEWER END WALL
ENERGY DISSIPATOR

NIRA CONSULTING ENGRS., INC.

NOTE:
EXPOSED EDGES SHALL BE
CHAMFERED ONE (1) INCH

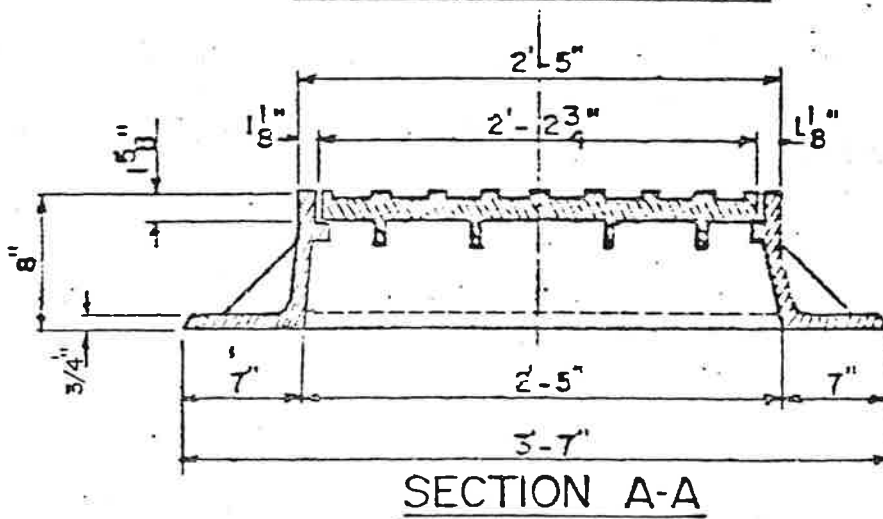
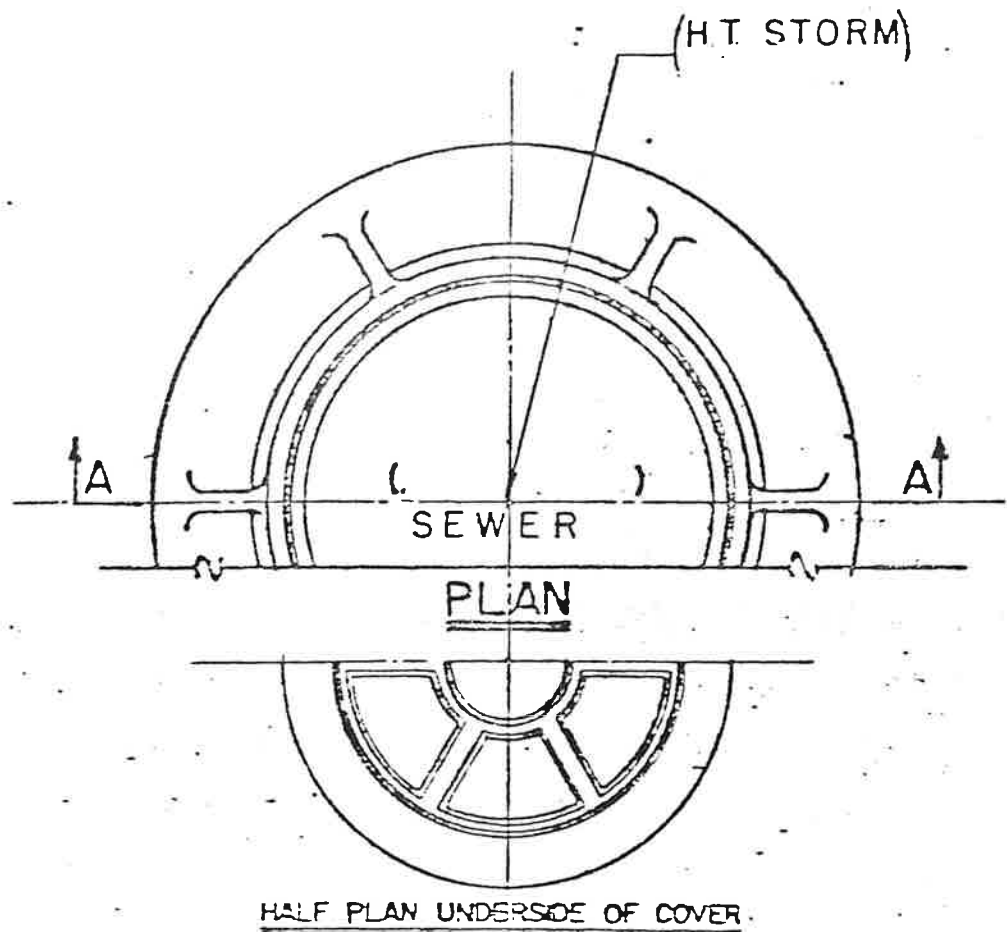


PIPE DIA.	L	W	A
36"	5.8'	4.6'	12"
42"	6.3'	5.8'	12"
48"	6.9'	6.9'	12"
54"	7.5'	8.0'	12"
60"	8.1'	9.2'	15"
72"	9.2'	11.5'	15"

HOPEWELL TOWNSHIP

TYPICAL ENDWALL
DETAILS

NIRA CONSULTING ENGRS., INC.



NOTES

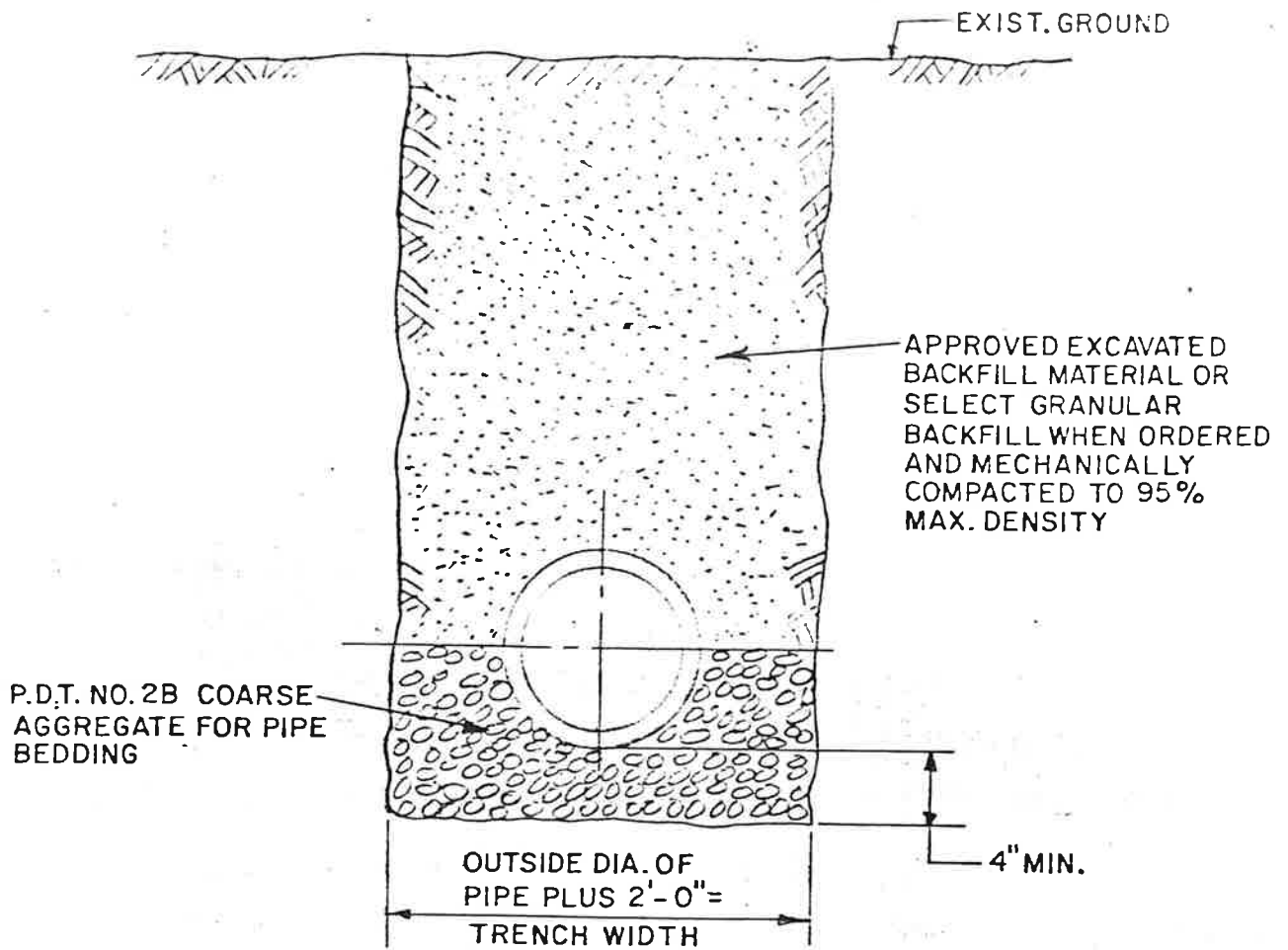
1. MANHOLE FRAME AND COVER SHALL BE ALLEGHENY FOUNDRY CO. TYPE S-25, OR NEENAH FOUNDRY CO. CAT. NO. R-1642 OR EQUAL.

2. COVER SHALL BE STAMPED AS SHOWN IN PLAN VIEW.

HOPEWELL TOWNSHIP

**MANHOLE FRAME &
COVER**

NIRA CONSULTING ENGRS., INC.

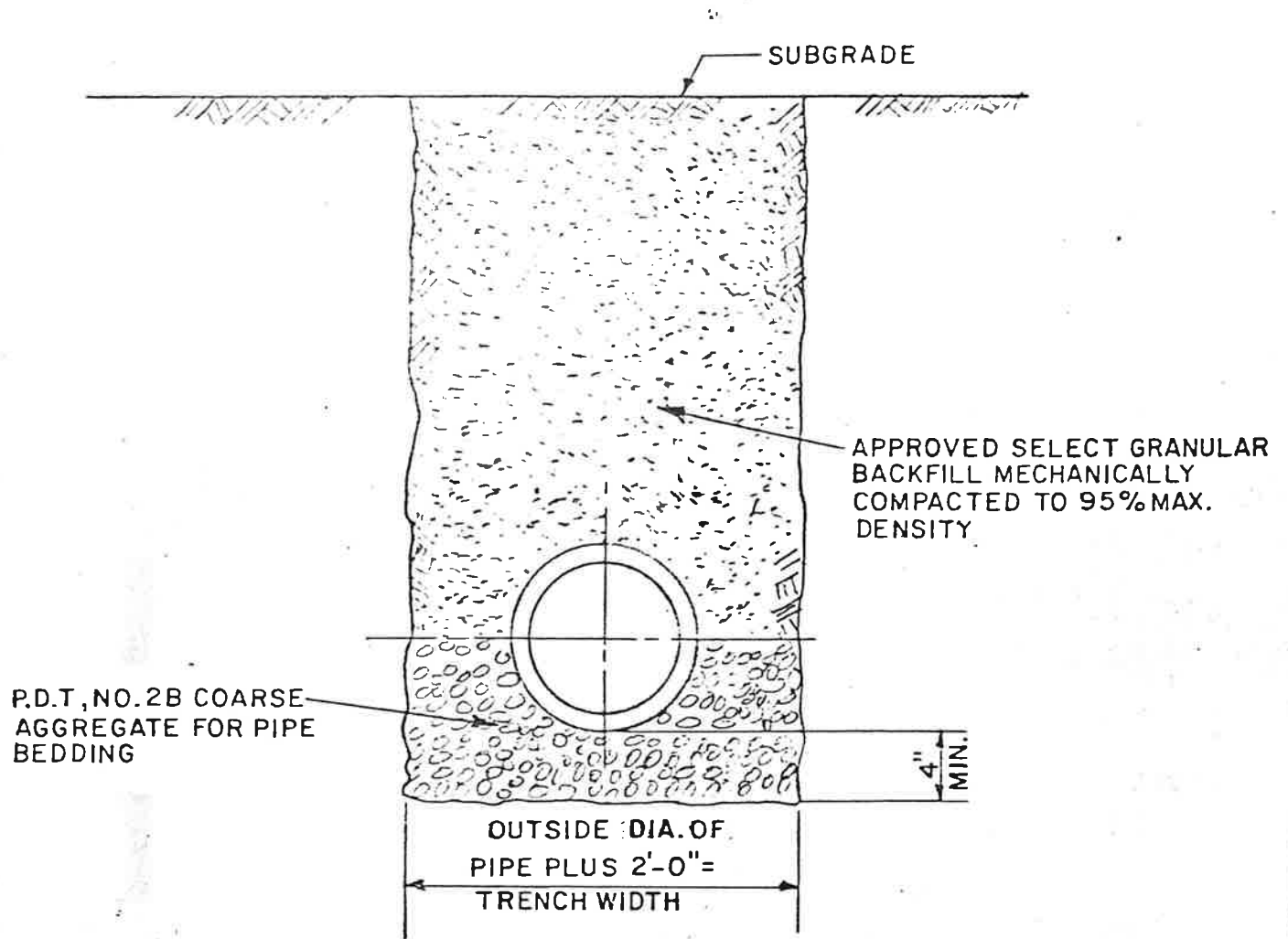


ALL TRENCH BACKFILL SHALL BE EXCAVATED MATERIAL AS APPROVED BY THE ENGINEER OR SELECT GRANULAR MATERIAL WHEN ORDERED.

HOPEWELL TOWNSHIP

TYPICAL TRENCH DETAIL
FOR
STORM DRAINAGE PIPE

NIRA CONSULTING ENGRS., INC.



HOPEWELL TOWNSHIP

TRENCH DETAIL IN ROADWAY
PAVEMENT AREAS

NIRA CONSULTING ENGRS., INC.